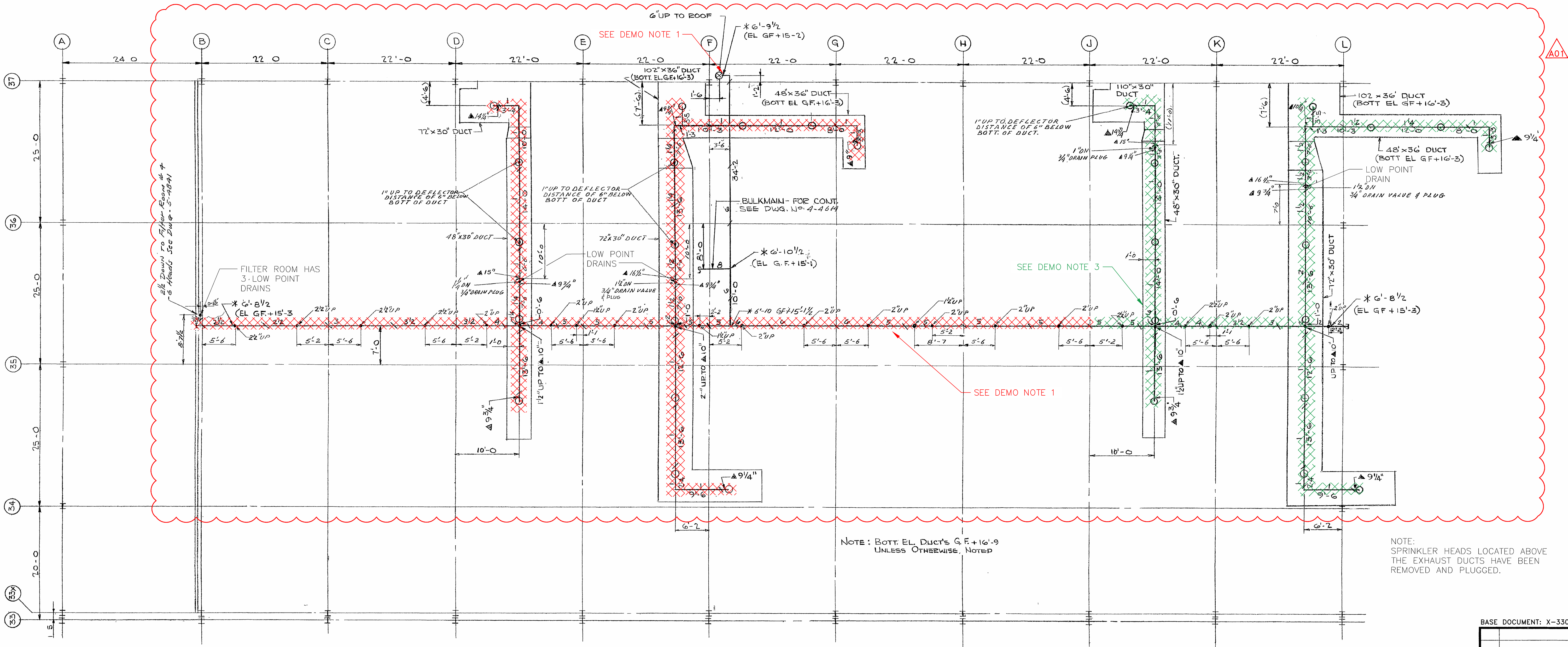


DEMO NOTES

1. REMOVE ALL BULK HEADS, SPRINKLERS, RISERS, PIPE, AND PIPE HANGERS.
2. CUT, CAP 6" SPRINKLER MAIN AT A CONVENIENT HEIGHT ABOVE CELL FLOOR.
3. ABANDON IN PLACE, MAY BE REMOVED AS NEEDED.
3. REFER TO TFR-SE-2016-0298 AND TFR-SE-2016-0275 FOR ANY ADDITIONAL MATERIAL TO BE ORDERED.
4. FME CAP ANY CUTS IN ABANDON SYSTEMS.
5. SPRINKLER SYSTEMS SHALL NOT BE REMOVED UNTIL APPROVED BY THE DEPARTMENT OF ENERGY.



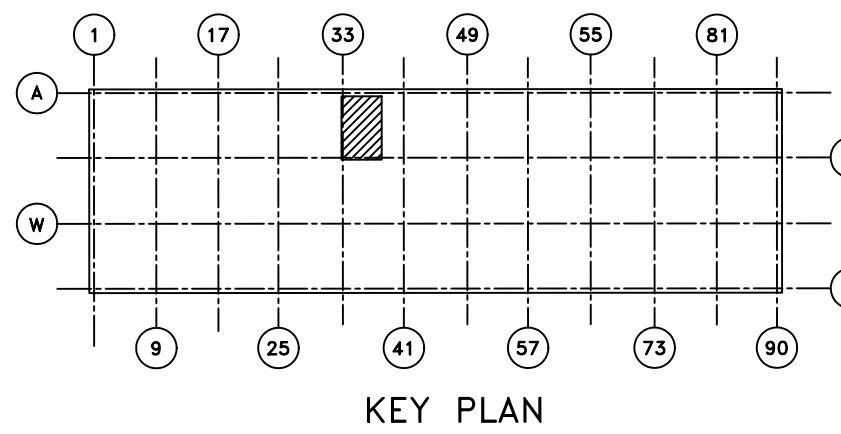
NOTE: BOTT. EL. DUCT'S G.F. + 16'-9" UNLESS OTHERWISE NOTED

NOTE: SPRINKLER HEADS LOCATED ABOVE THE EXHAUST DUCTS HAVE BEEN REMOVED AND PLUGGED.

This document has been reviewed and is UNCLASSIFIED and NOT UCN. This review does not constitute clearance for public release.
#192 *DIG. SIG.
Authorized Derivative Classifier Date

SPRINKLER LAYOUT GROUND FLOOR UNDER DUCTS
SCALE: 1/8" = 1'-0"

* DESIGN MANAGER: APPROVAL AND DATE:



HYDRANT SYMBOLS		DEVICE SYMBOLS	FITTING SYMBOLS	VALVE SYMBOLS
TWO-WAY	THREE-WAY			
		NON-FREEZE VALVE ASSY	RISER THRU FLOOR	GATE
		ALARM VALVE IN RISER	VERTICAL BEND (NOT RISER)	GLOBE
		ITC INSPECT'S TEST COUNT'N	SWING JOINT	ANGLE
PIPE SYMBOLS		DRY-PIPE VALVE (DIFFERENTIAL TYPE)	PIPE HANGER LOCATION	SCREW CHECK
		DRY-PIPE VALVE (W/QUICK OPEN DEVICE)	CAP	FLANGED CHECK
		WATER MOTOR GONG	U/G GATE (W/INDIC POST)	U/G GATE (W/VALVE BOX)
			NIPPLE OR PIPE UP OR DN	
				SPECIAL - INDICATE TYPE & HEAD TEMP
				SPECIAL - INSIDE MOTOR EXHAUST DUCT
				SPECIAL - NOT INSIDE DUCT
				SPECIAL - UPRIGHT HEAD INSIDE DUCT

AUTO SPRINKLERS (COUNT)	
	212° = 30
	325°-360° =
	SPECIAL =
	SPECIAL =
TOTAL HEADS THIS SHEET 30	

SHEET NO		TITLE	
		REFERENCE DRAWINGS	
		REFERENCE DRAWINGS	

BASE DOCUMENT: X-330SP 5-4663-A REVISION 3		POOR QUALITY ORIGINAL			
A01 CFC PER ESO E6663-001		*DIG. SIG.			
3 AS-BUILT FOR ESO #2931		11/18/18			
8 GENERAL REVISION		1/19/20			
155 UGHS FOR PDS		1/19/20			
CERTIFIED FOR CONSTRUCTION		1/19/20			
FOR APPROVAL		1/19/20			
FOR INFORMATION		1/19/20			
ISSUE PURPOSE		BY			
		DATE			
UNITED STATES					
ATOMIC ENERGY COMMISSION					
ARTHUR G MCKEE & COMPANY					
INDUSTRIAL ENGINEERING DIVISION-CLEVELAND OHIO					
CONTRACT NO. AT-(40 1)-2138					
DRAWING TITLE					
386 SPRINKLER PLAN					
SYSTEM 32 AT GROUND FLOOR					
DRAWING APPROVED-DATE		DRAWING APPROVED-DATE			
J D WILKERSON		L H JACKSON			
ARCHITECT ENGINEER		ARCHITECT ENGINEER			
DATE		DATE			
5/1/18		5/1/18			
CHECKED		CHECKED			
C W		C W			
DATE		DATE			
5/1/18		5/1/18			
DESIGN		DESIGN			
E.C.		E.C.			
DATE		DATE			
5/1/18		5/1/18			
PROJECT		PROJECT			
PORTSMOUTH		PORTSMOUTH			
BUILDING		BUILDING			
X-330SP 5-4663-A		X-330SP 5-4663-A			
SHEET		SHEET			
A01		A01			